



This  
Is  
Where  
We  
Meet

CAROUSEL

35 Baker St, London,  
W1U 8EN



# This Is Where We Meet

Michael Chance

Geraint Ross Evans

Bobbye Fermie

Archie Franks

Joana Galego

Melissa Kime

Rachel Mercer

Tim Patrick

Fraser Scarfe

Eleanor Watson

CAROUSEL



Supported using public funding by  
**ARTS COUNCIL  
ENGLAND**

Carousel Next Door  
71 Blandford Street  
Marylebone, London, W1U 8AB

6th - 31st  
January 2021  
10am-6pm



*Eleanor Watson  
Dresser  
Oil on paper  
33x23cm*

## Foreword

You're not sure what ghost this is that bears down on you, you're not sure what depths that dark holds out beyond the curtains. Rachel Mercer's and Bobbye Fermie's paintings - the canvas such a cold-sweat tussle, the watercolour so poised and expectant - stake out the enclosure that the present ten imaginations inhabit. This Is Where We Meet is a meeting in a pressurized chamber. There is a weight coming down on these artists that all of them acutely sense, even if they might lend it differing names. The city; the city's tangles of lives and detritus and histories; the city's demise, perhaps; most generally, the awareness of a fraught, turbid communal experience that it is the artist's business to register.

More particularly, the pressure is sustained by the companionability that this clutch of young artists have nurtured, a few years on from their graduations. At their backs there is also a shared grounding in observational drawing, for the most part via the liferooms and such like classes of the Royal Drawing School. A shared power. Just look round this show if you ever worry that the experience of using line to interpret visual data might tie an artist down to a constricting tradition. Each of these ten has pushed forward to establish a distinctive personal language - or in the case of the capacious Michael Chance, several! - and the circle that binds them is virtuous, one of mutual encouragement. Exhibiting at this stage in their careers, they exhibit a particular earnest intensity: witness the poignantly emotive interiors of Tim Patrick, or Joana Galego's intricate reveries about relationships. Equally, we encounter the will to reflect on the contemporary condition, pursued contrastingly on the one hand by Geraint Evans in his magnificently panoptic *The Closer We Are* and on the other by Archie Franks in his wry, painfully funny fragmentations.

Pushed from behind by responsibilities to the world at large and likewise by peer group pressure, the artist naturally hopes to press onward into uncovered ground, discovering fresh and wonderful marks and images. Melissa Kime plunges furthest into the oneiric, mythic reaches that picturing possesses and that counter the notion of making fact its basis. Closer to the centre of that spectrum are the exuberant graphic achievements of Eleanor Watson and Fraser Scarfe - hers dazzling indoors performances, his all gusty and gutsy plein-air. This is not a lightweight show, but that does not mean it lacks in delight. There is pressure, but there is also release.

Julian Bell  
13 December 2020

# Paintings







## Michael Chance

Michael Chance is a British painter living and working in London. He earned his Postgraduate Diploma in Drawing at The Royal Drawing School in London. His educational and personal interests have influenced his thematic exploration which is politically and philosophically charged, through drawing and painting. These influences contribute to his modern, cinematic and personal painting.



**No fly tipping**  
Oil on paper  
225x153cm  
Michael Chance

£3500

email: [info@carousel-london.com](mailto:info@carousel-london.com)





**Modern Melancholy**  
Ink on paper  
27 x 21cm

£650

email: [info@carousel-london.com](mailto:info@carousel-london.com)





**Commuter Belt**

*Ink on paper*

*27 x 21cm*

*Michael Chance*

£650

email: [info@carousel-london.com](mailto:info@carousel-london.com)





**The End of Farm Lane**

*Ink on paper*  
27 x 21cm

£650

email: [info@carousel-london.com](mailto:info@carousel-london.com)





***Interior (study)***

*Oil on board*

*26 x 20cm*

*Michael Chance*

*£750*

*email: [info@carousel-london.com](mailto:info@carousel-london.com)*





**Interior**

Oil on canvas

40x50cm

Michael Chance

£950

email: [info@carousel-london.com](mailto:info@carousel-london.com)









## Geraint Ross-Evans

Geraint Ross Evans was born in 1988 in Caerphilly and grew up in Cardiff, Wales. He studied at Swansea Metropolitan University in 2009 (BA (Hons) in Fine Art) and Royal Drawing School postgraduate programme (2014-15). He was awarded the Directors Prize and shortly after and The Richard Ford Award from Royal Academy of Arts. Geraint's studio is now based in Cardiff; he continues to work and teach between Cardiff and London.

From small sketches through to accomplished large-scale drawings, drawing from observation has always been central to Geraint's practice. Often combining artistic disciplines, his themes are built around the central concern of the individual's experience, in both the visual, political and physical geography of place.

**Cardiff Rivers Group (Llandaff Weir)**

Charcoal on Paper

48x122cm

Geraint Ross Evans

£1500

email: [info@carousel-london.com](mailto:info@carousel-london.com)





**The Closer We Are**  
Charcoal on Paper  
48x366cm  
Geraint Ross Evans  
£2500

email: [info@carousel-london.com](mailto:info@carousel-london.com)





**3 Cardiff Rivers Group Study (Descent)**

Charcoal on paper  
30x18cm(Aprox)

Geraint Ross Evans

£100

email: [info@carousel-london.com](mailto:info@carousel-london.com)





**Cardiff Rivers Group Study**

Charcoal on paper  
28x52cm(Aprox)

Geraint Ross Evans  
£150



**Cardiff Rivers Group Study (Drag)**

Charcoal on paper

Geraint Ross Evans

£175

email: [info@carousel-london.com](mailto:info@carousel-london.com)







**Cardiff Rivers Group Study (Wader)**  
Charcoal on Paper  
20 x 20cm (Aprox)  
Geraint Ross Evans

£95

email: [info@carousel-london.com](mailto:info@carousel-london.com)





**Camo Jacket Study**  
Brush and Ink  
30 x 45cm (Aprox)  
Geraint Ross Evans

£200

email: [info@carousel-london.com](mailto:info@carousel-london.com)







## **Bobbye Fermie**

Bobbye Fermie (b. 1990, Amsterdam, The Netherlands) completed the post-graduate programme The Drawing Year at the Royal Drawing School in 2015 after finishing her BA in Site Specific Art at the Royal Academy of Fine Art Antwerp. Bobbye's work mainly consists of dreamlike watercolours in which she portrays a sense of intimate stillness and softness that she relates to an introverted character. Bobbye is interested in highlighting the intimacy within the home setting and imagining a centre stage for her characters. She currently lives and works in London.



**Laundry Sunday**  
Watercolour on paper  
6.9x5.5cm  
Bobbye Fermie

£250

email: [info@carousel-london.com](mailto:info@carousel-london.com)





**Before the Night**  
Watercolour on paper  
34x21cm on Paper  
Bobbye Fermie

£650

email: [info@carousel-london.com](mailto:info@carousel-london.com)





***When Everyone Leaves***

*Watercolour on paper*

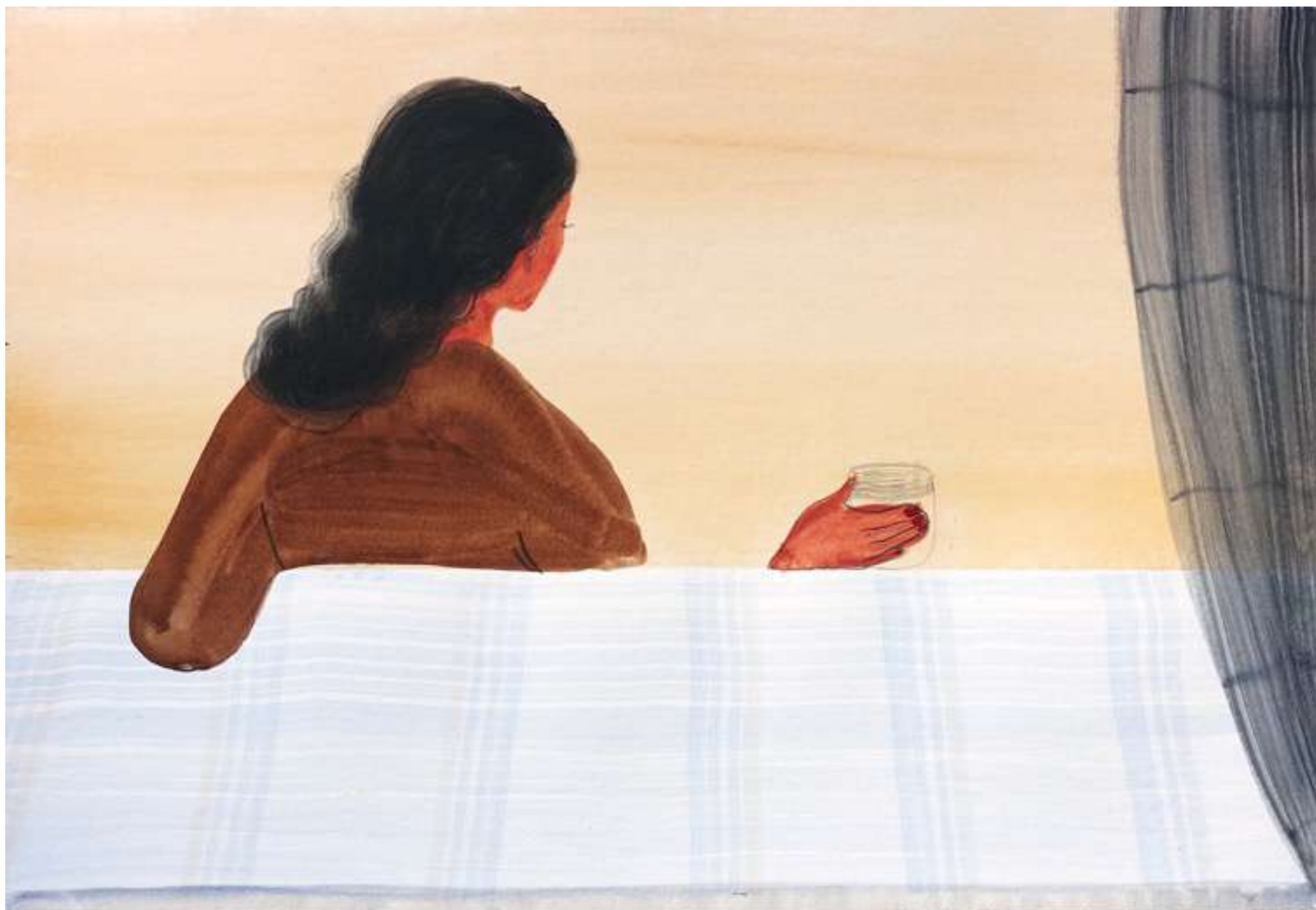
*34x21cm*

*Bobbye Fermie*

£650

email: [info@carousel-london.com](mailto:info@carousel-london.com)





**WaitingForYou**  
Watercolour on paper  
48x122cm  
Bobbie Fermie

£650

email: [info@carousel-london.com](mailto:info@carousel-london.com)





**Making the Bed**  
Watercolour on paper  
7x5.3cm  
Bobbye Fermie

£250

email: [info@carousel-london.com](mailto:info@carousel-london.com)









## Archie Franks

Franks holds his post graduate diploma, The Royal Academy Schools, 2012, and a First-Class BA, Honours, City & Guilds London Art School, 2009. The artist is the recipient of various awards and honours including the Jerwood Painting Fellowship, 2016, the Sainsbury Scholarship in Painting, The British School at Rome 2013; Tooth Award 2012; Gordon Luton Award 2012; Richard Ford Award, 2011; and the Philip T Ribbon Award, 2011.

*"I use imagery from popular culture, leisure and consumer culture and my own everyday and history and mix it in with grand eras of art history, such as the baroque and rococo as well as major 20th century styles. The way I paint is a way to filter through memories and images from the culture that surrounds me and a way to render the familiar strange." - Franks*

### **Monster Munch with Moon**

Oil on canvas

153x27cm

Archie Franks

£3000

email: [info@carousel-london.com](mailto:info@carousel-london.com)





**Seagulls (after Martin Parr)**

Oil on canvas

32x57cm

Archie Franks

£3000

email: [info@carousel-london.com](mailto:info@carousel-london.com)



## Joana Galego

Joana was born in 1994 in Cascais, Portugal, studied Painting at the Faculty of Fine Arts of the University of Lisbon and moved to London in 2016 for the Drawing Year. Since graduating in 2017 and receiving the Sir Denis Mahon Award she has kept on drawing and painting in Lewisham, participating in group shows and artistic residencies in the UK, USA and Portugal and working with children and adults as an art educator. She's currently developing a new body of work for a solo show with Aleph Contemporary.

In addition to various international private collections, Galego's work is found in the Royal Collection Trust of the British Royal Family, UK. Recent solo exhibits include the Royal Drawing School, London, UK, 2019 and the Museu das Artes de Sintra, Portugal, 2016. The artist has participated extensively in group shows including Galeria da Junta de Freguesia de Santa Maria Maior, Lisbon, Portugal, 2019; British Museum, London, 2018; Cave Space, London, 2018; Leegate House, London, 2018; Royal Drawing School, London, 2017; Christie's King Street, London, 2017.



**Go Gentle**  
Acrylic and oil on canvas  
170x154cm  
Joana Galego

£4400

email: [info@carousel-london.com](mailto:info@carousel-london.com)





***Mother fleeing as a teen***  
*Oil on linen*  
*160x105cm*  
*Joana Galego*

*not for sale*





**Study 1**  
*Pencil/Pastel on paper*  
Joana Galego

*not for sale*





**Study 2**  
*Pencil/Pastel & Ink on paper*  
Joana Galego

*not for sale*





**Study 3**  
Pencil/wash on paper  
Joana Galego

*not for sale*









## Melissa Kime

Melissa Kime studied Fine Art at University College Falmouth and completed The Drawing Year at The Royal Drawing School in 2012, where she won the Windsor and Newton Prize. She was selected for Bloomberg New Contemporaries 2014 and featured in Amelia's Magazine. Kime completed an MA in Painting at the Royal College of Art and participated in the 2020 London Art Fair.

"My paintings are set to a Roman Catholic backdrop they are cloaked in Catholic Folklore and magick. The women in my work perform rituals centred upon healing, jinx removal or the prevention of bad things happening-fertility spells and protection but mostly, these women are trying to connect together and survive, through the linking of menstrual blood, plaited hair and autobiographical experiences."

- Kime

***Ode to ophelia, wrapped up in her daisy chains***

Oil on canvas

220x170 cm

Melissa Kime

£10 000

email: [info@carousel-london.com](mailto:info@carousel-london.com)





**Where do Angels go when they die?**  
Acrylic, watercolour and crayon on paper  
21x29cm  
Melissa Kime

£900

email: [info@carousel-london.com](mailto:info@carousel-london.com)





***Ode to ophelia, wrapped up in her daisy chains***

*Mixed media*

*Sketchbook page*

*Melissa Kime*

*Not for sale*

*email: [info@carousel-london.com](mailto:info@carousel-london.com)*



## Rachel Mercer

Born in Cambridgeshire, Mercer studied at Cardiff School of Art and Design for her BA and graduated in 2012 before being awarded the postgraduate programme at Royal Drawing School. Since 2014 she has been a practicing artist and art educator in London. She co-founded Mercer Chance Gallery which she closed in 2018 to focus on her own practise.

She paints figures to express perception of the self; exploring reality through sensual and bodily experience. Human figures meet the world and each other, exploring physical and emotional connections through dynamic and contorted positions, evoking the figure's struggle for meaning and virtue. Space around figures becomes distorted or fragmented, reflecting their being-in-the-world.



**Taking**  
Oil on Canvas  
60x60cm  
Rachel Mercer

£800

email: [info@carousel-london.com](mailto:info@carousel-london.com)





**Alone Again**  
Oil on canvas  
76x102cm  
Rachel Mercer

£1200

email: [info@carousel-london.com](mailto:info@carousel-london.com)





**Study For Fold, Michael in Bed**

*Ink on paper*

*19x14cm*

*Rachel Mercer*

£190

email: [info@carousel-london.com](mailto:info@carousel-london.com)





**Huddle**  
Oil on Canvas  
100x120cm  
Rachel Mercer

£1500

email: [info@carousel-london.com](mailto:info@carousel-london.com)





**Recover**  
Sepia ink & Goache on paper  
19x14cm  
Rachel Mercer

£150

email: [info@carousel-london.com](mailto:info@carousel-london.com)





**Study For Fold, Michael in Bed**  
Goache on paper  
19x14cm  
Rachel Mercer

£120

email: [info@carousel-london.com](mailto:info@carousel-london.com)





**Michael on Pontoon**

15x10cm

2020

Rachel Mercer

£130

email: [info@carousel-london.com](mailto:info@carousel-london.com)





**Drawing for Fold**  
Pencil on paper  
27x20cm  
Rachel Mercer

NFS

email: [info@carousel-london.com](mailto:info@carousel-london.com)



## Tim Patrick

Having studied traditional portrait painting in Florence, Italy, Tim Patrick has subsequently attended the University of Brighton where he received First Class Honours, and in 2015 completed a postgraduate at The Royal Drawing School.

Patrick's work is grounded in encounter, working in situ and exploring a subject through different iterations and mediums. At the heart of the work is an pursuit of what it means to be in a place, and a painterly response to it.

He has recently been awarded the Elizabeth Greenshields Foundation Grant for emerging figurative artists. He undertook a residency in Venice in 2019 as part of the "Invisible Gardens" initiative. His work was featured in the 2018 Threadneedle Painting Prize and the 2019 Wales contemporary, and is the 2020 Artist in Residence at Trinity Buoy Wharf.



*The RedRoom*  
Oil on linen  
205x170cm  
Tim Patrick

£6500

email: [info@carousel-london.com](mailto:info@carousel-london.com)



***The RedRoom (Study)***

*Ink on paper*

*25x20cm*

*Tim Patrick*

£200

email: [info@carousel-london.com](mailto:info@carousel-london.com)





**Yu Shan's Room**

*Ink on paper*

*50x40cm*

*Tim Patrick*

£750

email: [info@carousel-london.com](mailto:info@carousel-london.com)



**Yu Shan's Room II**

Oil on Board  
2019  
90x60cm approx

£1000





**Bed, Hackney**

Oil on Board  
2019  
29x35cm approx

£600



**Still Life I**  
Ink on paper  
18x24cm  
Tim Patrick

£150

email: [info@carousel-london.com](mailto:info@carousel-london.com)





**Living Room**

*Ink on paper*

*18x24cm*

*Tim Patrick*

£200

email: [info@carousel-london.com](mailto:info@carousel-london.com)



**Table II**  
Montotype on paper  
22x29cm  
Tim Patrick

£160

email: [info@carousel-london.com](mailto:info@carousel-london.com)





**Curtain II**  
Montotype on paper  
29x25cm  
Tim Patrick

£200

email: [info@carousel-london.com](mailto:info@carousel-london.com)





Michael Chang

© 2015 Michael Chang. All rights reserved. This work is a reproduction of the original artwork. For more information, please contact the artist at [contact information].



## Fraser Scarfe

Fraser Scarfe grew up in Lincolnshire, where he has worked from a studio since 2007. From 2008-09 Fraser was Artist in Residence at Lincoln Cathedral and had his first solo exhibition there at the end of 2009. In 2013 he studied at The Prince's Drawing School (now the Royal Drawing School) and since 2016 has held the role of Drawing Year Senior Manager, managing the postgraduate 'Drawing Year programme at the School.

Scarfe exhibits regularly in Lincoln and London, and his work was shown in 'The Best of The Drawing Year 2012-13' exhibition at Christie's international. In 2013 he won the Drawing Bursary at the 2013 ING Discerning Eye exhibition. As a painter, drawing has always been firmly at the core of Scarfe's practice. Scarfe's paintings and drawings always begin on location, a direct response to the landscapes (familiar or strange) that the artist finds himself in.



***Tree in Liquorice Park***  
*Charcoal on paper*  
*115x115cm*  
*Fraser Scarfe*

£2200

email: [info@carousel-london.com](mailto:info@carousel-london.com)





**Dry trees: Pignano**

*Oil on board*

*30x40cm*

*Fraser Scarfe*

*£650*

*email: [info@carousel-london.com](mailto:info@carousel-london.com)*





**Pignano Trees**

*Oil on board*

*60x40cm*

*Fraser Scarfe*

£950

email: [info@carousel-london.com](mailto:info@carousel-london.com)



**Hampstead Trees**  
Acrylic and oil on board  
110x110cm  
Fraser Scarfe

£2500

email: [info@carousel-london.com](mailto:info@carousel-london.com)



## **Eleanor Watson**

Eleanor recently received an MA from City and Guilds of London Art School (2019). Previously completing The Drawing Year at The Royal Drawing School (2016) and receiving a BA at Wimbledon College of Art (2012). She was winner of the prestigious Jonathan Vickers Fine Art Award 2017, the ACS City and Guilds Studio Prize and the Slaughterhaus Print Prize 2019.

Eleanor works primarily in paint and print. Her most recent works frame moments of light; passing across objects within the home. Melancholic images are washed in colour and come in and out of focus; creating quiet moments in which to contemplate memory, and longing in image-making.



***The Doors No Longer Hang True***

*Oil on canvas*

*100x80cm*

*Eleanor Watson*

£4500

email: [info@carousel-london.com](mailto:info@carousel-london.com)



***Shifting Clarities***  
Watercolour on paper  
71x51cm  
Eleanor Watson

£800

email: [info@carousel-london.com](mailto:info@carousel-london.com)





***With No Windows of Mirrors***

*Watercolour on paper*

*18.7x13.5cm*

*Eleanor Watson*

£180

email: [info@carousel-london.com](mailto:info@carousel-london.com)



**Cast New Light**

Watercolour and gouache on paper  
37x26cm (each)  
Eleanor Watson

£700

email: [info@carousel-london.com](mailto:info@carousel-london.com)





***The Dusk Afterwards 2***

*Watercolour on paper*

*72.8x54cm*

*Eleanor Watson*

£800

email: [info@carousel-london.com](mailto:info@carousel-london.com)



**Dresser**  
Oil on paper  
33x23cm  
Eleanor Watson

£400

email: [info@carousel-london.com](mailto:info@carousel-london.com)





**The Doors No Longer Hang True 2**  
Watercolour and gouache on paper  
148x111cm  
Eleanor Watson

£1400

email: [info@carousel-london.com](mailto:info@carousel-london.com)



**Blue Tablecloth**  
Watercolour on paper  
37.5x25cm  
Eleanor Watson

£400

email: [info@carousel-london.com](mailto:info@carousel-london.com)





***A Little Sightless***

*Oil on paper*

*36x24cm*

*Eleanor Watson*

£400

email: [info@carousel-london.com](mailto:info@carousel-london.com)



***Full of Vast Landscape***

*Watercolour on Paper*

*13.4x18.1cm*

*Eleanor Watson*

£180

email: [info@carousel-london.com](mailto:info@carousel-london.com)



With thanks to Carousel, the artists involved, Julian Bell and the Arts Council for support.

